

**EXHIBIT C**  
**(PAGE 1 OF 2)**  
**Drainage Easement**

LEGAL DESCRIPTION

A PARCEL OF LAND BEING A PORTION OF LOT 17, VISTA BUSINESS PARK, A PLAT RECORDED OCTOBER 9, 2000 AT RECEPTION NO. 2085264 OF THE BOULDER COUNTY RECORDS LOCATED IN THE NW 1/4 AND SW1/4 OF SECTION 12, TOWNSHIP 1 SOUTH, RANGE 69 WEST OF THE 6TH P.M., COUNTY OF BOULDER, STATE OF COLORADO, BEING MORE PARTICULARLY DESCRIBED AS FOLLOWS:

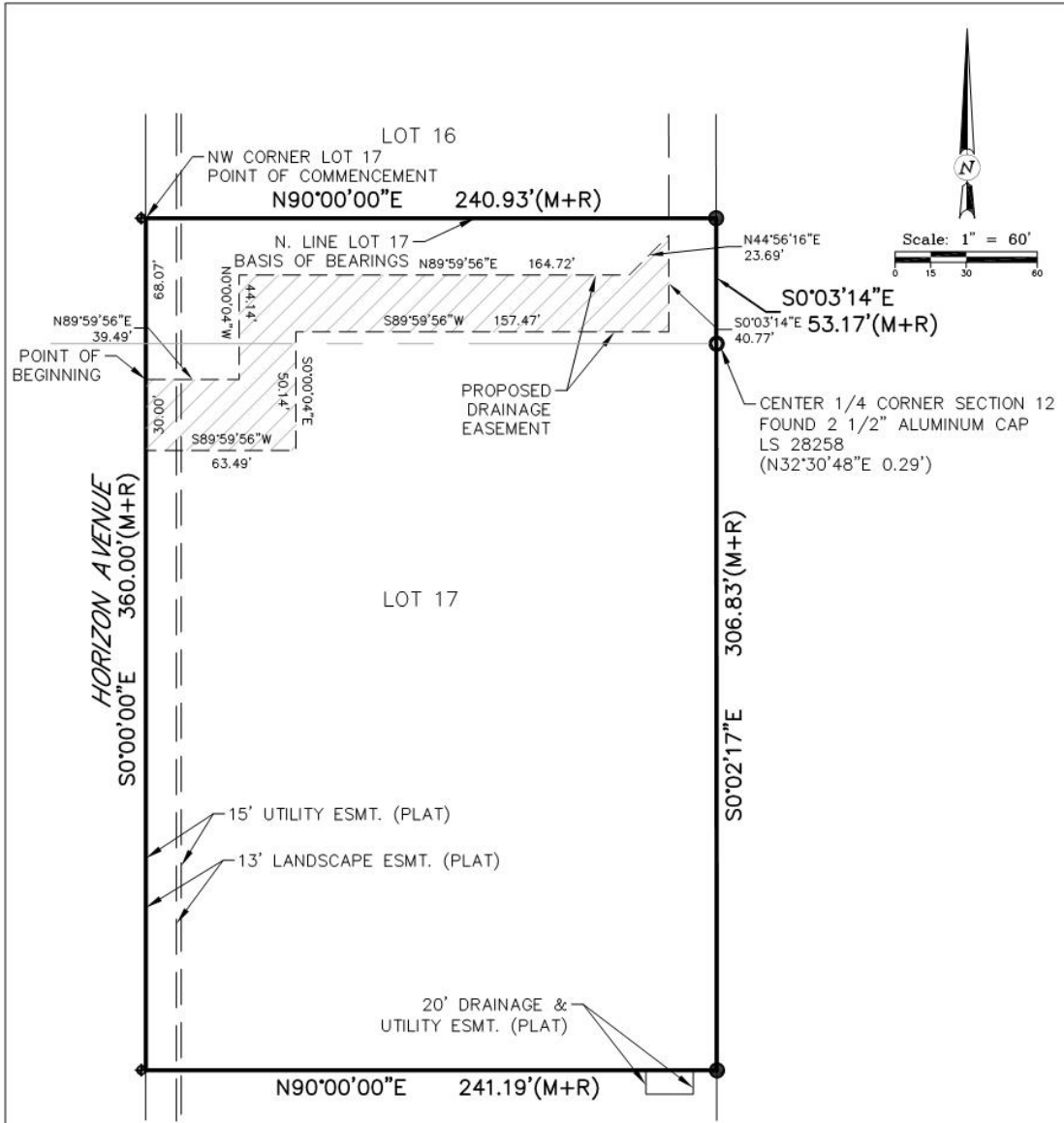
COMMENCING AT THE NW CORNER OF SAID LOT 17, WHENCE THE NORTH LINE OF SAID LOT 17 BEARS N90°00'00"E, SAID LINE FORMING THE BASIS OF BEARINGS FOR THIS DESCRIPTION; THENCE S00°00'00"W, ALONG THE WEST LINE OF SAID LOT 17 A DISTANCE OF 68.07 FEET TO THE POINT OF BEGINNING;

THENCE N89°59'56"E, A DISTANCE OF 39.49 FEET;  
THENCE N00°00'04"W, A DISTANCE OF 44.14 FEET;  
THENCE N89°59'56"E, A DISTANCE OF 164.72 FEET;  
THENCE N44°56'16"E, A DISTANCE OF 23.69 FEET;  
THENCE S00°03'14"E, A DISTANCE OF 40.77 FEET;  
THENCE S89°59'56"W, DISTANCE OF 157.47 FEET;  
THENCE S00°00'04"E, DISTANCE OF 50.14 FEET;  
THENCE S89°59'56"W, A DISTANCE OF 63.49 TO A POINT ON SAID WEST LINE;  
THENCE N00°00'01"E ALONG SAID WEST LINE, A DISTANCE OF 30.00 FEET TO THE POINT OF BEGINNING.

SAID PARCEL CONTAINS 6,884 SQ. FT., 0.158 ACRES MORE OR LESS.



A. JOHN BURI P.L.S. #24302  
FOR AND ON BEHALF OF  
SCOTT, COX & ASSOCIATES, INC.  
1530 55TH STREET  
BOULDER, COLORADO 80303  
303.444.3051  
11/04/19  
PROJECT NO. 19216D



**EXHIBIT C**  
**PAGE 2 OF 2**



**SCOTT, COX & ASSOCIATES, INC.**  
consulting engineers • surveyors  
1530 55th Street • Boulder, Colorado 80303  
(303) 444 - 3051